



Certification Guideline
NURTURE MODULE
Version 11.2 October 2018


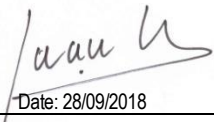

FormatCode
GC-NUT-PC-03

Revision:02

Pág. 1 de 12

Certification Guideline

NURTURE MODULE
Version 11.2 - Oct 2018

EDITED BY	REVIEWED BY	APPROVED BY	REVISION N°
Technical Department  Date: 28/09/2018	Quality Manager  Date: 28/09/2018	Operations Manager  Date: 28/09/2018	02
CAUSE OF THE NEW REVISION: Update Version 11.2.			



Certification Guideline

1. NURTURE MODULE CERTIFICATION SYSTEM	3
1.1. Introduction.....	3
1.2. Normative Documents	3
1.3. Application Options	3
1.4. Registration process.....	4
1.4.1. Producer confirmation	5
1.5. Acceptance.....	6
1.6. Assessment procedures.....	6
1.6.1. Self-Assessments / Internal inspections	6
1.6.2. External Inspections	6
1.6.3. Off-site evaluation.....	9
1.6.4. Inspection duration	9
1.6.5. Unannounced Reward Programme	9
1.7. Certification process.....	9
1.7.1. Checklist.....	9
1.7.2. Certification decision	9
1.7.3. NURTURE Certificate Cycle	9
1.7.4. Assessment results and compliance levels	10
1.8. Extension of the certification validity.....	11
1.9. NURTURE Unannounced Inspections/audits.....	11
1.10. Sanctions.....	11
1.11. Certification Integrity Program (CIPRO)	11
1.12. Notification and Appeals.....	11
1.13. Confidentiality	12
1.14. Disclaimer.....	12



1. NURTURE MODULE CERTIFICATION SYSTEM

1.1. Introduction

This document describes the rules for any party seeking certification against the NURTURE Module Version 11.2 (hereinafter referred to only as NURTURE Module).

The NURTURE Module builds upon the GLOBALG.A.P. Integrated Farm Assurance (IFA) Standard in its currently applicable version and adds additional rules and control points.

This scheme identifies key principles and practices which when complied with by Tesco's producers and suppliers of fresh fruit and vegetables, will ensure that their production and produce handling systems are sustainable, environmentally sound and responsible. In 2016 Tesco decided to restructure the scheme in a way that builds upon the current version of the GLOBALG.A.P. Integrated Farm Assurance Standard.

This document describes the basic steps and considerations relevant for the applicant producer to implement the NURTURE Module. It sets the rules on how the audit process works.

1.2. Normative Documents

The following NURTURE Module normative documents provide information for the implementation and audit assessment of the NURTURE Module:

- a) The NURTURE Module Scheme Rules (this document) describe the basic steps and considerations relevant for the applicant producer to obtain the NURTURE Module certification. They set the rules on how the registration, audit and certification process, work, as well as describe the relationship between growers/producers, Tesco, primary suppliers and certification bodies.
- b) The NURTURE Module Certification Body & Integrity Program Rules describe the relationships between the Certification Bodies (CBs), Tesco and GLOBALG.A.P. They set the rules for CB and inspector/auditor approval and the integrity program.
- c) The NURTURE Module Control Points and Compliance Criteria (CPCC). The CPCC define additional compliance requirements that GLOBALG.A.P. certified producers are required to implement and to be audited against.
- d) The NURTURE Module checklist, which consists of the relevant GLOBALG.A.P. Integrated Farm Assurance checklists and of the additional NURTURE Module control points and compliance criteria.

There will be two different checklist versions:

- Individual Producer / Option 1 Multisite without QMS
- Producer Group / Option 2 / and Option 1 Multisite with QMS

The checklists shall be used for external audits, internal group assessments and self-assessments. The NURTURE audit becomes valid only when the completed checklist has been uploaded to the GLOBALG.A.P. Database.

The certification body shall upload the checklist to the GLOBALG.A.P. Database, where it

- e) The NURTURE Producer Confirmation Form (PCF), which is the document by which a Tesco Primary Supplier confirms that a producer/producer group is selected to supply products to Tesco. The NURTURE assessment becomes valid only when the PCF has been completed and sent by the primary supplier to the CB, and after the CB has uploaded it to the GLOBALG.A.P. Database.

Once the certification body uploads the NURTURE checklist and the Producer Confirmation Form, these documents will be visible to the following:

- The Tesco team
- The GLOBALG.A.P. Secretariat
- The Tesco primary suppliers (based on individual release by the producer)
- ACERTA (Trustee for NURTURE).

Visibility of data is described in Annex I.4 NURTURE Data Access Rules.

1.3. Application Options

Application to the NURTURE Module assessment is open only to individual producers or producer groups that supply Tesco. Producers will be registered in the GLOBALG.A.P. Database by ACERTA.

Before the registration ACERTA needs to confirm that the producer is an existing Tesco producer or a prospective producer, directly linked to an approved primary supplier of Tesco.

Regarding Tesco Primary Suppliers:

- a) Tesco Primary Suppliers are companies who sell directly to Tesco. They may be producers or traders.
- b) All Tesco Primary Suppliers, except those who are producers who sell directly to Tesco, shall contact GLOBALG.A.P. Secretariat and apply for a Bookmarking account. GLOBALG.A.P. will grant Tesco Primary Suppliers access to the GLOBALG.A.P. Database and



Certification Guideline

NURTURE MODULE

Version 11.2 October 2018

FormatCode
GC-NUT-PC-03

Revision:02

Pág. 4 de 12

provide instructions on how to manage lists of their producers in the database. A supporting document with bookmarking instructions for Tesco Primary Suppliers is available for guidance.

- c) The Tesco Primary Suppliers shall manage their certified supplier base via the GLOBALG.A.P. Bookmarking system.
- d) The Tesco Primary Supplier shall provide ACERTA with the Producer Confirmation Form, available at GLOBALG.A.P. website. Without this evidence the producer cannot be certified and any NURTURE assessment lacks validity.

Only producers who are connected with a Tesco approved Primary Supplier and whose production processes are certified or in process of being certified against the GLOBALG.A.P. Integrated Farm Assurance Standard may apply for an assessment through ACERTA. The NURTURE Module cannot be certified if the producer does not have a valid GLOBALG.A.P. Certification, as it relies on and complements the GLOBALG.A.P. Integrated Farm Assurance Standards.

Applicants can apply for an assessment under one of the valid certification options as described below. A detailed description of the below described certification options is available in the current version of the GLOBALG.A.P. General Regulations.

Certification options follow the same rules as the currently valid GLOBALG.A.P. General Regulations.

Option 1 – Individual Certification

- a) Individual producer applies.
- b) The individual producer is the certificate holder once certified.

Option 1 – Multisite without Implementation of a Quality Management System (QMS)

- a) Individual producer or one organization owns several production sites that do not function as separate legal entities.

Option 1 – Multisite with Implementation of a Quality Management System (QMS)

- a) Individual producer or one organization owns several production sites that do not function as separate legal entities, but where a QMS has been implemented.
- b) In this case the rules of the GLOBALG.A.P. General Regulations Part II – Quality Management System Rules (QMS Rules) shall apply.

Option 2 – Group Certification

- a) A producer group applies for group certification.
- b) The group, as a legal entity, is the certificate holder once certified.
- c) A group shall have a QMS implemented and comply with rules set out in the GLOBALG.A.P. General Regulations Part II – QMS Rules.

Registration for the relevant GLOBALG.A.P. IFA Standard in its current version is a pre-requisite for a producer (applicant) to apply for the NURTURE Module.

1.4. Registration process

- a) The applicant must register for the NURTURE Module via ACERTA that carries out the GLOBALG.A.P. IFA Certification.
- b) ACERTA is responsible for the registration of the applying producer in the GLOBALG.A.P. Database and for data updates.
- c) The registration process follows the GLOBALG.A.P. General Regulations in its currently applicable version.
- d) During the registration ACERTA registers products of the producer for the NURTURE Module. All production sites to be NURTURE certified shall be registered in the GLOBALG.A.P. Database.
- e) By registering, the applicant commits to comply with the following:
 - Provision of additional registration data as specified in the NURTURE Module registration form and in the NURTURE Data Access Rules.
 - Communication of all data updates that are relevant for the registration to ACERTA. E.g.: update of responsible persons, detected non-conformities, new products, new sites.
 - Inclusion of new sites/producers to an existing NURTURE certificate may be done following GLOBALG.A.P. General Regulations Part II.
- f) Confidentiality and data access:
 - The NURTURE Data Access Rights regulate the access of different users of the GLOBALG.A.P. Database.
 - During registration applicants give written permission to GLOBALG.A.P., Tesco and ACERTA to use the registration data for internal processes and sanctioning procedures if applicable.
 - Producers can assign additional data access (to the NURTURE Audit Checklist) to individual companies (NURTURE Module Observer companies). To identify these companies, the producer needs to provide their O-KEY to the certification body.
 - ACERTA shall ask Tesco for authorization to certify producers who declare two O-Key numbers (i.e. two primary suppliers) for the same product. Without Tesco's approval these scenarios shall not be certified.
 - ACERTA may not release any data to other third parties without the written consent of the applicant.



Certification Guideline

NURTURE MODULE

Version 11.2 October 2018

FormatCode
GC-NUT-PC-03

Revision:02

Pág. 5 de 12

- g) ACERTA shall upload the PCF (Producer Confirmation Form) to the GLOBALG.A.P. Database under the category "Other Document". The upload shall be done once for every Primary Supplier the producer supplies to and shall include all the products the producer delivers to the respective primary supplier. The PCF shall be upload at latest before the producer is certified.
- h) Production site or product area changes, as well as inclusion/de-listing of members within a producer group must be informed to ACERTA.
- i) The NURTURE Scheme Management and the NURTURE Governance Committee reserve the right to refuse/terminate participation of a producer to prevent the scheme being brought into disrepute.

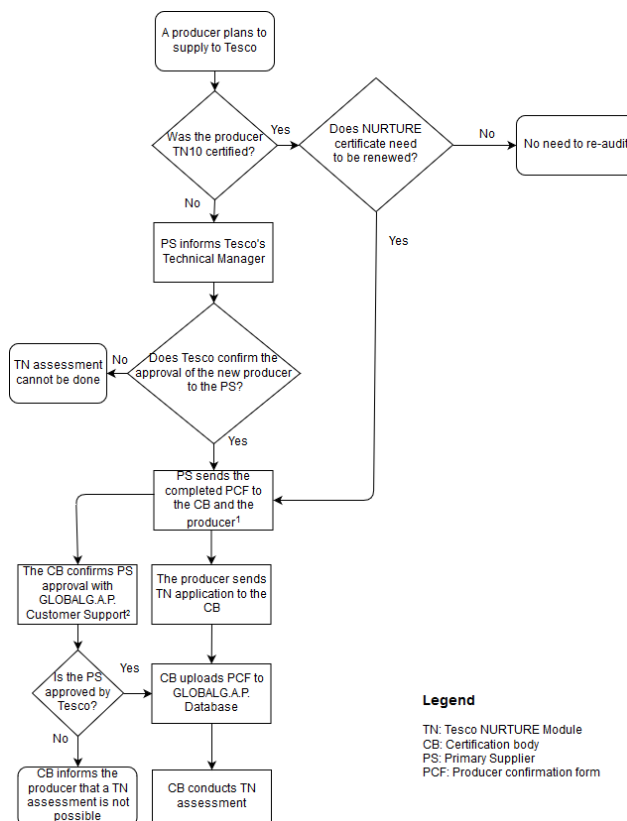
Parallel production of Nurture and non-Nurture products (GLOBALG.A.P. or not GLOBALG.A.P. certified) is allowed. Same rules than General Regulations shall be followed.

It is possible grow Nurture products and non-Nurture products only if they are separated in different production sites.

Control measures to prevent mixing of products shall comply with GLOBALG.A.P. IFA Traceability and Segregation and Mass Balance chapters and is evaluated under the requirement NM 5 in the Nurture Module checklist.

1.4.1. Producer confirmation

Only producers who have been confirmed by Tesco Primary Suppliers may apply for NURTURE certification. ACERTA shall confirm it by the process explained below.



¹ ACERTA and producers shall keep records of the PCF sent by the PS

² ACERTA shall validate Tesco's approval of each primary supplier with GLOBALG.A.P. Customer Support team at least once a year. ACERTA shall keep records of these validations.

Tesco

Informs GLOBALG.A.P. who the approved primary suppliers are by providing a list of approved primary suppliers to GLOBALG.A.P.

Primary Supplier

Confirms producer by filling in the producer confirmation form. In the form, the primary supplier provides its O-Key and confirms the producers' GGN(s).

The primary supplier shall send a copy of the producer confirmation form to the producers' certification body.



Certification Guideline

NURTURE MODULE

Version 11.2 October 2018

FormatCode
GC-NUT-PC-03

Revision:02

Pág. 6 de 12

Producer

If the producer was not certified under Tesco NURTURE V10 (TN10), the primary supplier shall first consult Tesco's Technical Manager in order to receive authorization for the inclusion of the producer in the NURTURE system.

In this case, the Primary Supplier shall send a copy of the authorization by Tesco together with the producer confirmation form ACERTA.

The producer shall provide to the primary supplier, all information necessary to fill in the producer confirmation form, including the certification body chosen and its contact details.

ACERTA Technical Department shall validate the approval of the primary supplier with GLOBALG.A.P. Customer Support at least once every year and keep evidence of this verification.

ACERTA shall upload the producer confirmation form into GLOBALG.A.P. Database.

1.5. **Acceptance**

The Operation Manager Scheme Manager or an approved auditor designed by Acerta will draw up a working programme by using the Acerta System from the review made to the "Certification Request Form". Based on the information provided by Certification request and Producer Confirmation Form, he/she will assign an auditor team, determine the appropriate working days, and define the interval of dates to undertake the audits and inform the auditor or auditor team, in writing, of the assignation and sample to be carried out, by the "**Working order**".

It is not possible to issue the working order if the corresponding PCF from the Primary Supplier is not received. It is not possible to conduct any audit without the working order.

For the registration to be accepted, applicants shall satisfy all the following conditions:

- a) Submit to ACERTA the NURTURE Module registration form, which shall include all the necessary information. Applicants shall have formally committed to comply with the obligations indicated in this document.
- b) With the acceptance of the applicant in the GLOBALG.A.P. Database, GLOBALG.A.P. will charge ACERTA the applicable NURTURE Module certificate license fee as set out in the current NURTURE Module fee table.
- c) The registration and acceptance process shall be finalized before an assessment can take place.

1.6. **Assessment procedures**

1.6.1. **Self-Assessments / Internal inspections**

The same rules as for GLOBALG.A.P. IFA apply.

AUDITOR TEAM ROTATION:

- ACERTA shall guarantee that a producer/producer group is not audited more than 4 consecutive times by the same inspector/auditor.
- This rule does not apply retrospectively to assessments done before the first introduction of this rule in October 2017.

Producers and producer groups shall also use the GLOBALG.A.P. and NURTURE Module combined checklist for their self-assessments and internal inspections and assess compliance with all control points.

Not conducting the self-assessment for the NURTURE Module will result in failure to achieve NURTURE certification.

1.6.2. **External Inspections**

These are the types of external inspection/audits that ACERTA may carry out, always combined with GlobalGAP IFA inspection/audits

Option 1 and Option 1 multisite without QMS.

Shall be carried out by ACERTA approved Nurture Inspectors or auditors. (See Nurture Control Programme - Annex Qualification Requirements)

- Initial inspections
- Re-certification inspections
- Surveillance inspection for scope extension
- Unannounced inspections

Option 2 and Option 1 multisite with QMS.

QMS audit shall be carried out by an ACERTA approved Nurture auditor. ACERTA approved Nurture Inspectors are able to carry out the inspections of producers within the producer group and production sites. (See Nurture Control Programme - Annex Qualification Requirements)

- Initial audits



Certification Guideline

NURTURE MODULE

Version 11.2 October 2018

FormatCode
GC-NUT-PC-03

Revision:02

Pág. 7 de 12

- Re-certification audits
- Surveillance producer inspections (second visit)
- Surveillance inspection for scope extension
- Unannounced QMS audit

The NURTURE Module checklist, which consists of the relevant GLOBALG.A.P. Integrated Farm Assurance checklists and of the additional NURTURE Module control points and compliance criteria. The GLOBALG.A.P. IFA Standard and the NURTURE Module shall always be audited simultaneously and by the same auditor.

There will be two different checklist versions:

- Individual Producer / Option 1 Multisite without QMS
- Producer Group / Option 2 / and Option 1 Multisite with QMS

The checklists shall be used for external audits, internal group assessments and self-assessments. **The NURTURE audit becomes valid only when the completed checklist has been uploaded to the GLOBALG.A.P. Database.**

The checklist must be uploaded to the GLOBALG.A.P. Database and be visible to the following:

- The Tesco team
- The GLOBALG.A.P. Secretariat
- The Tesco primary suppliers (based on individual release by the producer)
- The certification bodies

Inspections must take place according to the Subsequent Inspections rules as explained in the GLOBALG.A.P. General Regulations.

Deadlines follow the same rules than GLOBALG.A.P. General Regulations.

The TN Module audit can only be assessed at the same time as the GLOBALG.A.P. IFA inspection, i.e. it is not possible to join a TN Module onto a GLOBALG.A.P. IFA inspection carried out at a different time of the year and by the same assessor.

The applicant shall give ACERTA and its inspectors/auditors reasonable access to all installations and documents that are seen to be relevant to the objectives and scope of the NURTURE Module assessment process.

Whenever an auditor or inspector detects a non-conformity against a major must control point of the GLOBALG.A.P. IFA or the NURTURE Module, ACERTA shall notify this situation to TESCO and the Primary Supplier on the day of the assessment or a maximum of 2 working days later.

ACERTA shall use the official Sanction Form and follow the instructions written on it to report non-conformities detected. The official Sanction Form is available on the GLOBALG.A.P. Website.

Corrective actions follow the same rules as set in the GLOBALG.A.P. IFA General Regulations.

Subcontractors

- a) A Subcontractor is defined as the entity furnishing labour, equipment, and/or materials to perform specific farm operation(s) under contract with the producer (e.g. custom harvesting of grain, spraying and picking of fruit)
- b) **Subcontractors shall agree that NURTURE approved ACERTA is allowed to verify the assessments through a physical inspection in cases of doubt.**
- c) Remarks shall explain the applicable subcontracting scenario for the relevant control points.

a) Inspection timing

The initial assessment of the NURTURE Module shall be timed to ensure that inspection takes place during the principle crop harvesting or handling activity period, so that all pesticide records, harvesting techniques and hygiene policies, etc. can be checked.

Principle crop is the one from which the producer sells the highest volume to Tesco.

For initial inspections to producers who grow multiple NURTURE crops within a consecutive harvesting season, crop grouping is allowed as explained in GLOBALG.A.P. IFA General Regulations. In case of grouping crops, the initial NURTURE assessment shall also be carried out during the harvest or handling of the principle crop.

For external assessments in subsequent years the assessment date will be timed to ensure that it is completed during, or as close as possible to the harvest period.

Failure to agree on an audit date after two unfulfilled requests for audit dates will lead to the **suspension of the producer from the NURTURE Module.**

When the producer grows products whose harvest seasons do not coincide in time:



Certification Guideline
NURTURE MODULE
Version 11.2 October 2018

FormatCode
GC-NUT-PC-03

Revision:02

Pág. 8 de 12

- i. Producers seeking NURTURE certification for a new product, may only add it to a NURTURE certificate after its entire production process has been completely checked, i.e. all control points shall be verified (same as for GLOBALG.A.P. crops as indicated in GLOBALG.A.P. GR Part I 5.3.1.c).
- ii. Each NURTURE product shall be assessed during harvest in the first year of their certification.
- iii. It is not necessary to conduct multiple visits during the different harvest windows if the NURTURE certification for those products is being renewed.
- iv. Re-certification assessments shall take place when at least one NURTURE crop is being harvested/handled.
- v. Surveillance assessments shall never take place when there is no NURTURE product being harvested/handled.
- vi. **ACERTA shall make sure that all NURTURE crops are inspected during harvest within a 4 year cycle.**
- vii. There are exceptions to this assessment taking place during harvest, such as when there is a very short harvest / handling window.
- viii. To comply with clause i. above, all CPCC shall be checked for each crop prior inclusion in the NURTURE certificate. However, it might not be necessary to conduct a new physical visit to the farm to inspect harvest activities of a new crop if a similar crop has already been audited during harvest and added to the certificate, e.g. adding plums to a certificate which already includes peaches.
*Crop groups are defined based on similarities in production and harvest processes and their risks established in ACERTA GLOBALG.A.P. IFA Control Program

Transition between NURTURE V10 and NURTURE Module V11 and when a producer changes from one CB to another is considered re-certification, i.e. not initial certification.

b) QMS audit

Producer groups or individual producers with multiple sites and QMS who apply for certification of the NURTURE Module, shall implement a QMS that guarantees compliance with Nurture Module and GLOBALG.A.P. IFA. ACERTA auditor shall evaluate the implementation of the QMS using the GLOBALG.A.P. QMS checklist and the relevant requirement of the Nurture Module.

For every control point, auditors shall assess whether the Nurture Module has been taken into account.

c) Producer groups or individual producers with multiple sites and QMS

ACERTA shall conduct initial and subsequent evaluations (surveillance and re-certification) following the same rules as those set in current version of the GLOBALG.A.P. IFA General Regulations, especially those regarding:

- Inspection timing.
- Sampling of producer group members/production sites.
- Initial inspection or first inspection by a new CB: as a minimum the square root (or next whole number rounded upwards if there are any decimals) of the total number of the producers/production sites in the certification scope shall be inspected before a certificate can be issued. During the validity period of the certificate, the surveillance inspection of (minimum) 50% square root of certified producers/production sites shall be carried out.

Sampling of producer group members/production sites must follow the same rules as set in the current version of the GLOBALG.A.P. IFA General Regulations. ACERTA must make sure that in the sample taken for the IFA audit there is always **at least the square root of the producers registered for the NURTURE Module** included.

It is mandatory to do the producers/production sites surveillance inspections of Nurture Module, combined with IFA producers/production sites surveillance inspections (second visit), following the same rules as defined in the GLOBALG.A.P. General Regulations.

In the case of recertification of Option 2 or Option 1 multi-site with QMS, the scope may be covered between the certification and the surveillance audits.

The producer/production site selection shall aim to cover all producer members/production sites of the producer group/company throughout the years, taking into consideration risk factors, new producers and random selection. Producers that move from one group to another shall have a higher possibility of being included in the sample of producers chosen by ACERTA.

The scope of the inspection of the producers/production sites selected in the sample must include:

- a) All products registered for certification that they grow
- b) All types of production i.e. Perennial, Open air, Covered
- c) All sub-scopes for which they are registered
- d) Inspections carried out on members/production sites in which more than one production type or sub-scope is evaluated count as one inspection for each sub-scope or production type.

A way of introducing NURTURE between GLOBALG.A.P. certification audits, is to add the NURTURE audit during the GLOBALG.A.P. surveillance audit to producer group members, provided the QMS requirements relevant to the production of NURTURE crops are also assessed for compliance (e.g. PPPL, product traceability and segregation, internal inspections). The NURTURE certificate issued, should be issued with same "valid to" date of the GLOBALG.A.P. certificate.



Certification Guideline

NURTURE MODULE

Version 11.2 October 2018

FormatCode
GC-NUT-PC-03

Revision:02

Pág. 9 de 12

For initial NURTURE certifications, at least the square root of the NURTURE producers shall be inspected. This might mean an increase in the number of the growers to be inspected in the GLOBALG.A.P. surveillance and re-certification audits.

1.6.3. Off-site evaluation

The evaluation off-site of some control points for option 1 announced inspections is not possible for any of the control points of the NURTURE Add-on.

However, off-site evaluation is possible for GLOBALG.A.P. IFA control points following the rules defined in GLOBALG.A.P. IFA General Regulations.

1.6.4. Inspection duration

A sufficient inspection duration shall allow the auditor/inspector to inspect all applicable control points; complete the checklist with sufficient comments and present the results to the producer right after the inspection has finished.

There is no minimum or maximum duration established, but an increase of 30 minutes to the duration of the GLOBALG.A.P. IFA assessment is considered sufficient to cover the evaluation of NURTURE module in most cases.

1.6.5. Unannounced Reward Programme

Option 1 producers that choose to participate in the GLOBALG.A.P. IFA Unannounced Reward Programme in GlobalGAP IFA request, will participate also for NURTURE Certification. In this case, NURTURE inspections/audits will also be unannounced as defined under the Unannounced Reward Programme in GLOBALG.A.P. IFA General Regulations.

1.7. Certification process

1.7.1. Checklist

ACERTA shall always inspect the complete checklist of the NURTURE Module (this includes the IFA Checklist) and therein confirm the information that was provided by the applicant in the NURTURE registration form. Because all control points of the NURTURE Module are Major Musts, remarks and **comments shall be given in all cases (Yes/No/NA)** for every control point in all assessments.

Remarks and comments (e.g. which document(s) were sampled) shall be site-specific and included in the checklist, showing that all the control points have been properly inspected.

Remarks and comments for the GLOBALG.A.P. IFA control points shall be given as indicated in the GLOBALG.A.P. IFA General Regulations.

Once the certificate decision is taken, ACERTA shall upload the checklist with the **results obtained on the day of the inspection**.

In Option 2 ACERTA only needs to upload the QMS checklist that includes the summary of the results from the producer inspections. It is not necessary to upload all producer inspection checklists.

Names and personal data of responsible persons or other employees shall not be entered in the "Remarks/Comments" field of the NURTURE or the GLOBALG.A.P. checklists. Instead, initials or other abbreviations shall be used. Alternatively, the position of the employee or internal codes/numbers assigned by the producer/company may be used.

1.7.2. Certification decision

Certification decisions must follow the four-eye principle as explained in the GLOBALG.A.P. General Regulations. That means the auditor/inspector doing the inspection/audit cannot take the certification alone, but it needs to be decided by NURTURE auditor independent from the one who conducted the assessment, or a certification committee where an independent NURTURE auditor takes part. The certification decision will only be visible once the Checklist has been uploaded for at least one NURTURE product to the GLOBALG.A.P. Database.

If certification is not achieved, i.e. if the non-compliances are not corrected, the NURTURE Module Checklist with all non-compliances, outstanding corrective actions and respective remarks, shall be uploaded to the GLOBALG.A.P. Database. This is then the final Checklist, which is also issued by ACERTA to the producer/producer group as proof of assessment. Corrective actions follow the same rules as set in the GLOBALG.A.P. IFA General Regulations.

After the upload of the Checklist to the GLOBALG.A.P. Database, the electronic certificate validation tool is made available.

The online certificate is the only official certificate.

The GLOBALG.A.P. and NURTURE certificates shall be issued by the same certification body.

1.7.3. NURTURE Certificate Cycle



Certification Guideline

NURTURE MODULE

Version 11.2 October 2018

FormatCode
GC-NUT-PC-03

Revision:02

Pág. 10 de 12

The NURTURE Certificate may only be issued if the producer has a valid certificate for the GLOBALG.A.P. Integrated Farm Assurance Standard. The NURTURE Certificate is not transferable from one legal entity to another.

The NURTURE Certification cycle is 12 months and shall be harmonized with the cycle of the GLOBALG.A.P. IFA Certificate.

It means that in the cases where the producer is in a GlobalGAP renewal audit, the Nurture module can be only certified in database once the new cycle of GlobalGAP Certificate is started (the first day of the cycle, or later). Both certificates may be issued with same cycle ("valid from" – "valid to" dates).

In the cases where GlobalGAP cycle finishes in the future, it may be shorten in order to align validity with the Nurture certificate.

In order to align inspection dates with GLOBALG.A.P. IFA, producers shall request ACERTA to shorten the validity of one of the certificates and to carry out the GLOBALG.A.P. and NURTURE Module assessment before the earlier expiry date. Certificate validities can then be matched avoiding gap in the certification of both standards.

1.7.4. **Assessment results and compliance levels**

The NURTURE Module is based on a scoring system and results in different compliance levels. The calculation of the compliance levels combines the scoring of the GLOBALG.A.P. IFA audit with the scoring of the NURTURE Module audit as described below. The results of the NURTURE Module assessment are only displayed in the GLOBALG.A.P. Database if a valid GLOBALG.A.P. IFA Certificate is at hand.

There is an overall 2-level rating for compliance with the NURTURE Module:

- Certified (pass, silver or gold)
- Open non-conformities/ Suspension

There is only one compliance level per certificate owner which applies to all the products in the NURTURE scope.

In the event of successive NURTURE assessments within a year, e.g. adding new crops to an existing certificate, unannounced inspections, etc. the compliance level will be the lowest obtained in any of the inspections carried out during the year.

For Option 2 and Option 1 Multisite the compliance level is established as the result of the "weakest performing" producer group member during the external inspection. This means that if during the inspection of the samples of the producer group members the "weakest" producer group member achieves the compliance level "silver", the compliance level of the whole group can only be "silver".

Compliance Levels:

Producers/Producer Groups who do have one or more non-conformities on the date of the assessment:

- **Open non-conformity:** when the producer was not NURTURE certified and does not close the non-conformities during the time period set (maximum 28 days after the inspection/audit).
If the non-conformity detected is not resolved within three (3) months, a complete inspection shall be performed before a certificate can be issued.

- **Certified – NURTURE Pass:**

For producers who have non-conformities on the day of the assessment, i.e.:

- Tesco NURTURE Module: < 100% Major Musts; or
- GLOBALG.A.P. IFA: <100% Major Musts; or
- GLOBALG.A.P. IFA: < 95% Minor Musts

And have solved them implementing corrective actions.

- **Suspended**

When the producer was NURTURE certified and does not close the non-conformities during the time period set (maximum 28 days after the inspection/audit).

Producers/Producer Groups who do not have any non-conformity on the date of the assessment:

- **Certified –silver:**
 - Tesco NURTURE Module: 100% Major Musts
 - GLOBALG.A.P. IFA: 100% Major Musts; ≥ 95% Minor Musts; ≥0% Recommendations
- **Certified –gold:** shall only be obtained by producers who do not have any non-conformity on the date of the audit.
 - Tesco NURTURE Module: 100% Major Musts
 - GLOBALG.A.P. IFA: 100% Major Musts; ≥ 98% Minor Musts; ≥50% Recommendations



Certification Guideline

NURTURE MODULE

Version 11.2 October 2018

FormatCode
GC-NUT-PC-03

Revision:02

Pág. 11 de 12

1.8. Extension of the certification validity

The validity of NURTURE certificates may be extended beyond the 12 months (for a maximum period of 4 months) only if there is a valid reason, which has to be recorded.

Here are the only two reasons that are considered to be valid:

- ACERTA wants to schedule the on-site inspection/audit after the certificate has expired in order to observe a certain part of the production process, because it has not been seen in the previous inspection/audit, because it is considered to be a high-risk process in terms of product safety or to be able to see a newly added product, process or a new or particular member of a producer group.
- ACERTA was not able to conduct the on-site inspection/audit and/or the producer was not able to receive the inspection audit due to circumstances beyond its control (force majeure) e.g.: natural disaster, political instability in the region, epidemic or unavailability of the producer due to medical reasons., as described by the rules in the GLOBALG.A.P. General Regulations.

Resource constraints are not a valid reason.

It is not allowed to extend NURTURE V10 certificates.

In order to align inspection dates with GLOBALG.A.P. IFA, producers shall request ACERTA to shorten the validity of one of the certificates and to carry out the GLOBALG.A.P. and NURTURE Module assessment before the earlier expiry date.

Certificate validities can then be matched avoiding a gap in the certification of both standards.

Annex I.2 of Nurture Module Scheme Rules 11.2 Oct 2018 includes additional information for scenarios where validities of GLOBALG.A.P. and NURTURE certificates need to be aligned.

1.9. NURTURE Unannounced Inspections/audits

During the 12 months of validity of the certificates, ACERTA shall carry out unannounced inspections/audits of a minimum of 10% of all producers/producer groups ACERTA has certified for NURTURE.

ACERTA will follow the same rules as defined in the current GLOBALG.A.P. General Regulations for unannounced inspections/audits.

1.10. Sanctions

The sanctioning of ACERTA follows the rules and processes as describes in the current version of the General Regulations.

A suspension of the contract will result in the total prohibition (all products, all sites) of the use of the NURTURE Certificate and any communication that may be linked to the NURTURE Module.

A cancellation of the contract between ACERTA and the producer shall be issued if:

- ACERTA finds evidence of fraud and/or lack of trust to comply with the NURTURE Module requirements,
- There is a contractual non-conformance.
- Suspension which have not been solved during the established period.

A producer who has received a cancellation shall not be accepted for the NURTURE Module for a period of 12 months after the date of suspension. In this case, the basic **GLOBALG.A.P. IFA Certification may also be affected**, depending on the reason for the suspension.

ACERTA may report findings of serious fraud or breaches of legal requirements/crimes detected to the NURTURE Governance Committee (NGC).

1.11. Certification Integrity Program (CIPRO)

ACERTA is subject to an ongoing integrity programme, additional to the one they are subjected to as GLOBALG.A.P. approved CBs.

1.12. Notification and Appeals



Certification Guideline
NURTURE MODULE
Version 11.2 October 2018

FormatCode
GC-NUT-PC-03

Revision:02

Pág. 12 de 12

The producer shall either resolve the non-conformances communicated or appeal to ACERTA in writing against the non-conformances, explaining the reasons for the appeal.

1.13. **Confidentiality**

The results of the assessment process of the registered producer/producer group will be available to the GLOBALG.A.P. Secretariat, to Tesco plc., to the Tesco Primary Suppliers and to ACERTA.

Any other party requiring information on the NURTURE Module assessment process concerning a producer is required to obtain the written consent from the said producer.

In all other respects, the Scheme Management and its authorized agents will treat in confidence all information concerning an applicant obtained during the course of the assessment process other than that which is in the public domain or unless otherwise required to do so by law.

The Scheme Management will, where appropriate, comply with and use all reasonable endeavor to ensure compliance by its authorized agents with the requirements of the UK Data Protection Act 1998 affecting any information held or stored concerning the producers and their activities.

1.14. **Disclaimer**

Under no circumstances shall Tesco, the Scheme Management or its appointed agents be liable for any losses, damage, charges, costs or expenses of whatever nature including consequential loss which any producer may suffer or incur by reason of, or arising directly or indirectly from, the activities of the Scheme, save to the extent that such losses, damage charges, costs and/or expenses may arise as a result of finally and judicially determined gross negligence or willful default of such person.

These Scheme Rules are subject to English Law and any litigation, claims or judicial actions will be judged in the courts of England.

If any competent authority considers any of the Scheme Rules to be unreasonable, then that individual regulation will be modified in order to be reasonable, but no other part of the Scheme Rules will be affected.